



*...connecting to the aftermarket*

## **CT23BM15**

### **BMW Double DIN Fitting Kit**



**Application:**  
**X3 (E83) 2003 - 2010**

***www.connects2.com***

**Designed and  
Engineered  
in the UK.**



### CT23BM15

BMW Double DIN fitting kit for BMW X3 (E83) 2003 - 2010. Finished in Matt Black. Relocates the factory climate control panel and switches for vehicles with a 5 switch panel opening. Dashboard modification is required to complete installation.

### Product Contents

1. Double DIN Fascia Panel
2. Button Relocation Panel
3. Fitting Accessories
4. Harnesses

### Prior to installation

Read the manual prior to installation. Technical knowledge is necessary for installation. The place of installation must be free of moisture and away from heat sources. Please ensure you use the correct tools to avoid damage to the vehicle or product.

**Connects2 can not be held responsible for the installation of this product.**

### Technical Support

Connects2 want to provide a fast and suitable resolution should you encounter any technical issues. With this in mind, when contacting Connects2, try to provide as much Information as possible. This will speed up the process and help us to help you.

**Please use our dedicated online technical support centre: [support.connects2.com](http://support.connects2.com)**



Subscribe to our YouTube Channel for installation guides and tips... [www.youtube.com/connects2](http://www.youtube.com/connects2)

## FITTING GUIDE

---

1. Loosen the air vents with a Panel Removal Tool



## FITTING GUIDE

---

2. Disconnect the hazard switch and wiring to the air vents, and remove the vents



3. Remove the two (2) screws located behind the air vents



4. Remove the top dash tray



5. Use a Panel Removal Tool to remove the air conditioning panel and trim



6. Disconnect the four (4) connections to the air conditioning panel



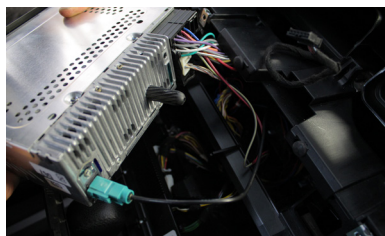
## FITTING GUIDE

---

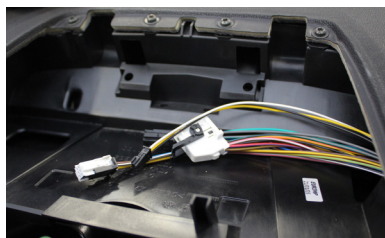
7. Remove the two (2) screws holding the OEM radio in place



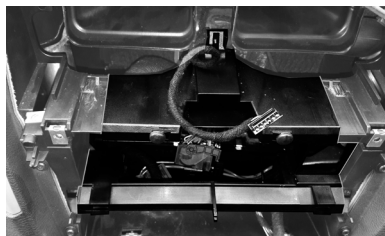
8. Remove the OEM radio and disconnect the DAB antenna (if vehicle is equipped) and quadlock connector



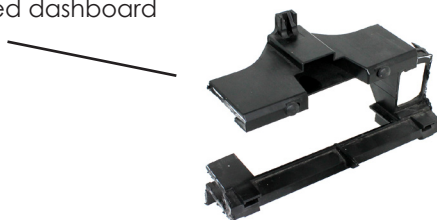
9. Reroute the four (4) connections from the air conditioning panel up and out on the right hand side of the top dash tray



10. Modify the dashboard by cutting the shaded area in the image to make space for the new radio

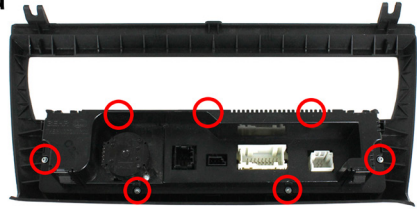


Removed dashboard plastic

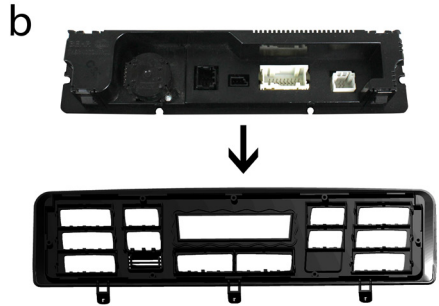


### Creating the new climate control button assembly

11a. Remove the seven (7) screws from the back of the OEM climate control panel. Discard the trim and retain the button panel



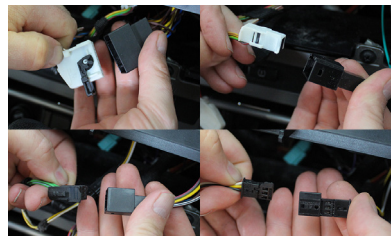
11b. Place the button panel inside the included trim as shown in Fig.b



11c. Use the screws removed in Step 11a to reattach the button panel to the included trim piece, creating the new climate control button assembly for use in the installation.



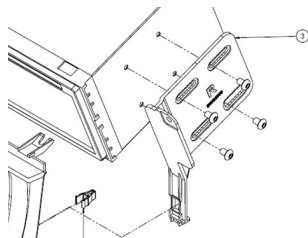
12. Connect the included extension leads to the back of the button relocation panel, and the preexisting connections of the vehicle (removed in Step 6)



## FITTING GUIDE

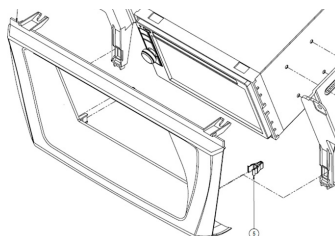
---

13. Attach the brackets to the new stereo using the supplied screws

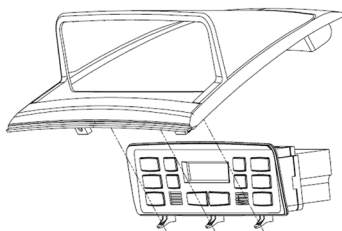


14. Place the stereo and bracket assembly into the dashboard, making all wiring connections, and screw into place using the OEM screws

15. Attach the included clips to the fascia panel and clip into place around the stereo



16. Place the climate control button assembly into the new hood and fix to the top of the dash.



17. Finally reconnect the hazard switch, pushing it into place, to complete the installation.



## This image shows a single page of white paper with horizontal ruling lines. The lines are evenly spaced and run across the width of the page. There are no margins, text, or other markings on the paper.



*...connecting to the aftermarket*