



Separated Tweeter and Midwoofer crossover

Tweeterhousing with black rubber finish

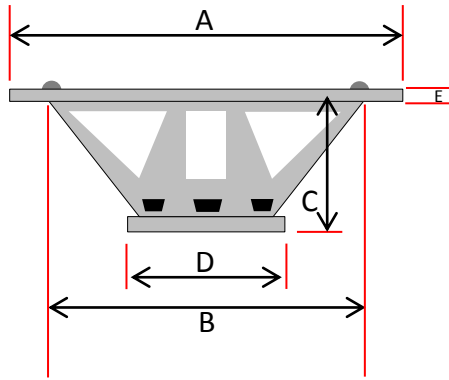


TECHNICAL SPECIFICATIONS

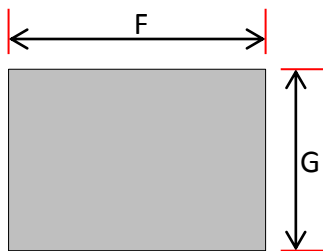
Model	GZRC 165NEO-IV (Installer version)	
Impedance	3 Ohm	
Frequency response	50Hz – 26kHz	
Cut-off frequency	3500 Hz (12 dB)	
SPL 1W/1M	90 dB	
Power Watt RMS	110	
Power Watt Maximum	170	
Crossover	2- Way	
Crossover parts	I-core coils / MOX resistors / MET & Elko capacitors / PTC	
Crossover function	Adjustable Tweeterlevel	
	Midwoofer (GZMW 165X-NEO)	Tweeter (GZRT 25T)
Cone (Dome)	Paper	Titanium
Cone color	Black	Titanium
Surround	Rubber	Rubber
Dustcap	Soft fiber	-
Basket / Frame material	Steel basket	Machined aluminum
Basket / Frame color	Black gloss powder coated	Black anodized
Terminal	Screw terminal	Cable
Magnet	Inside-Neodymium	1 x Neodymium
Voice coil	30 mm / 1.18" copper round wire	25 mm / 1" copper round wire
Voice coil former	Aluminum	Aluminum
RE	3.2 Ohm	3 Ohm
SPL	88 dB	92 dB
FS	44.3 Hz	1500 Hz
QMS	5.67	
QES	0.51	
QTS	0.47	
VAS	21.4L / 0.76 cu.ft	
MMS	15.8 Gr	
BL	5.2 N/A	
RMS	0.8 kg/s	
CMS	0.82 mm/N	
LE	0.57 mH	
Linear Excursion	+ / - 5 mm / 0.2"	
X Max	10 mm / 0.4"	
Frequency response	50 Hz – 3.5 kHz	3 – 26 kHz
Powerhandling	100 / 150 W	70 / 110 W
Outer diameter	165 mm / 6.5"	49.5 mm / 1.95"
Mounting diameter	142.5 mm / 5.61"	43.10 mm / 1.7"
Mounting depth	48 mm / 1.89"	10 mm / 0.39"



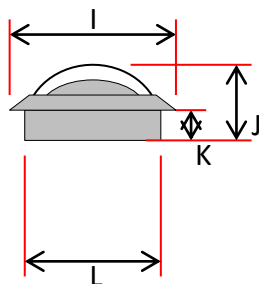
TECHNICAL SPECIFICATIONS



A	165 mm / 6.5"
B	142.5 mm / 5.61"
C	48 mm / 1.89"
D	81 mm / 3.19"
E	4.3 mm / 0.169"



F	60 mm / 2.36"
G	48 mm / 1.89"
H	27 mm / 1.06"



I	49.5 mm / 1.95"
J	18.8 mm / 0.74"
K	10 mm / 0.39"
L	44 mm / 1.73"



CROSSOVER FUNCTIONS

TW-Level	Effect
- 2 dB / 0 dB / + 2 dB	3 stepped individual tweeter adjustment

